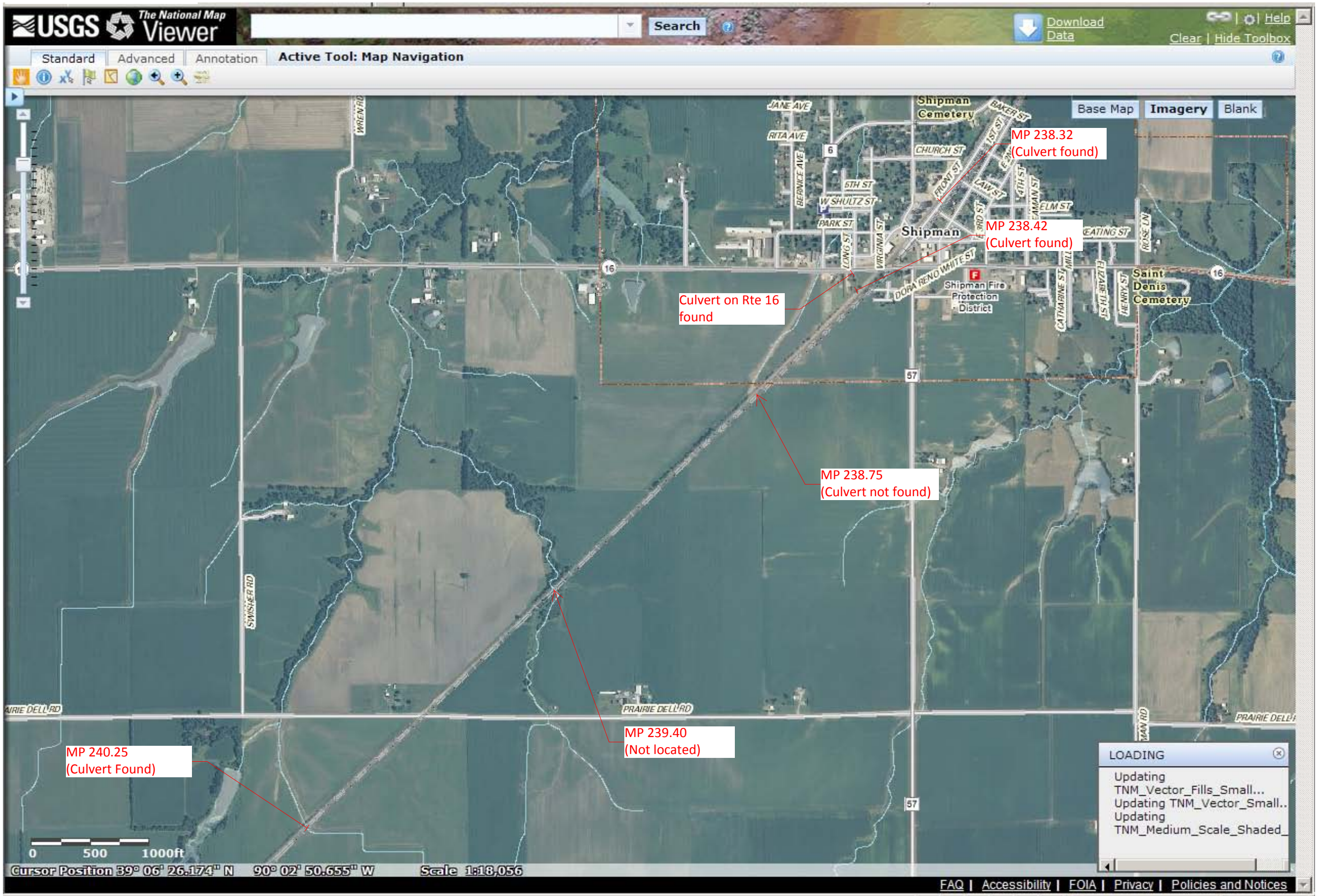
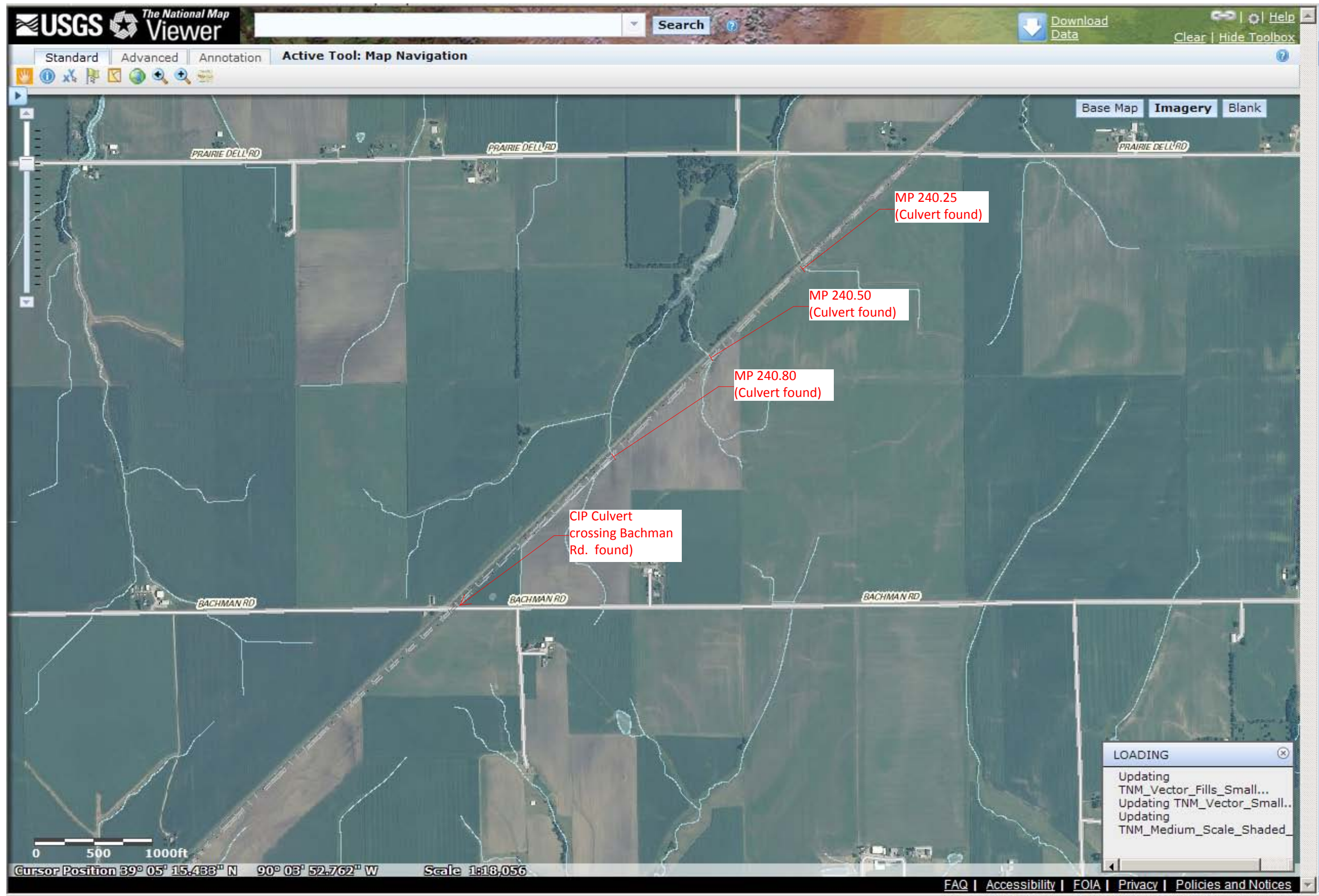
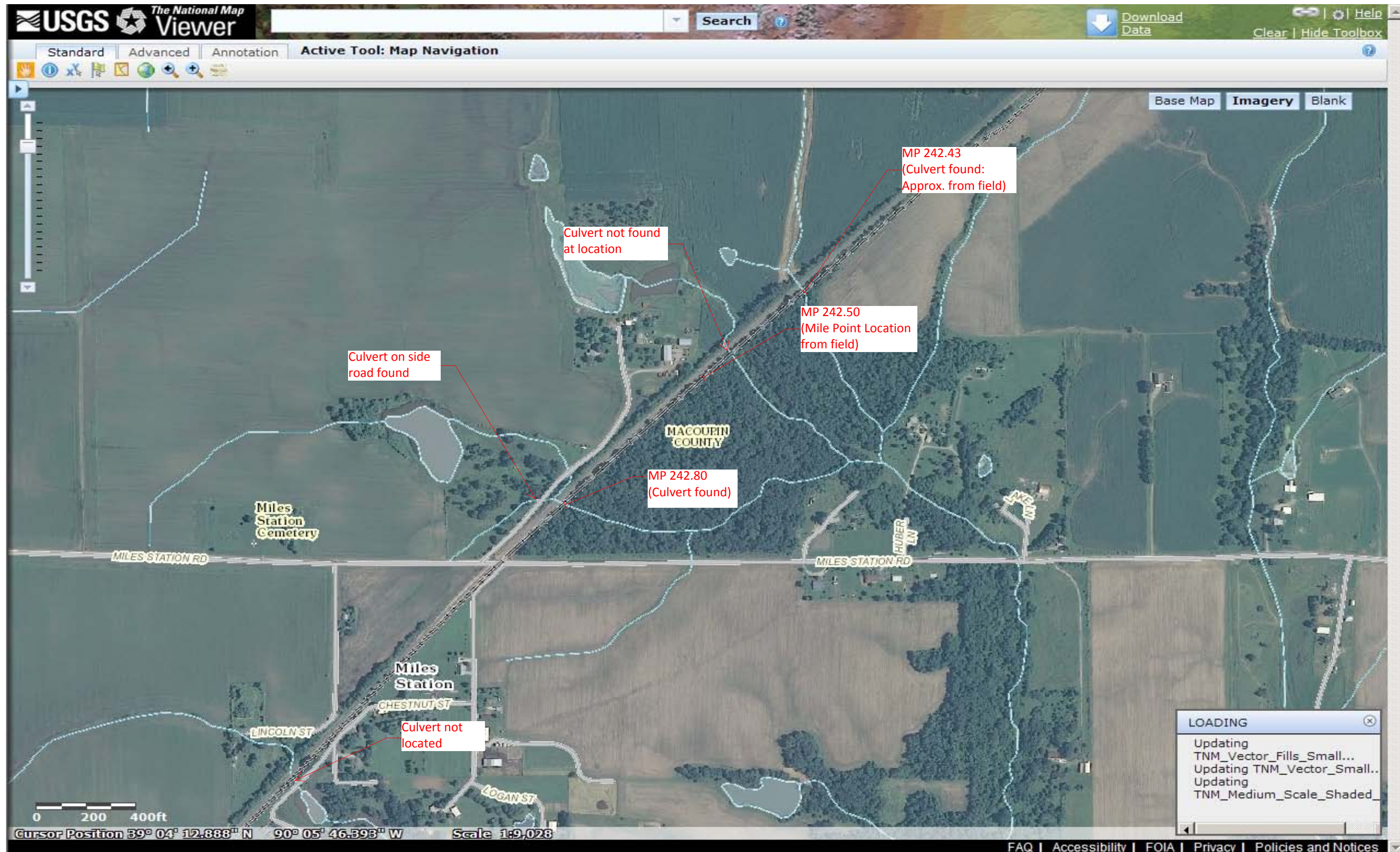


APPENDIX D: USGS CULVERT LOCATIONS







USGS The National Map Viewer

Standard Advanced Annotation Active Tool: Map Navigation

Download Data

Search

Base Map Imagery Blank

Little Piasa Creek

DOPIN NW

Culvert not located

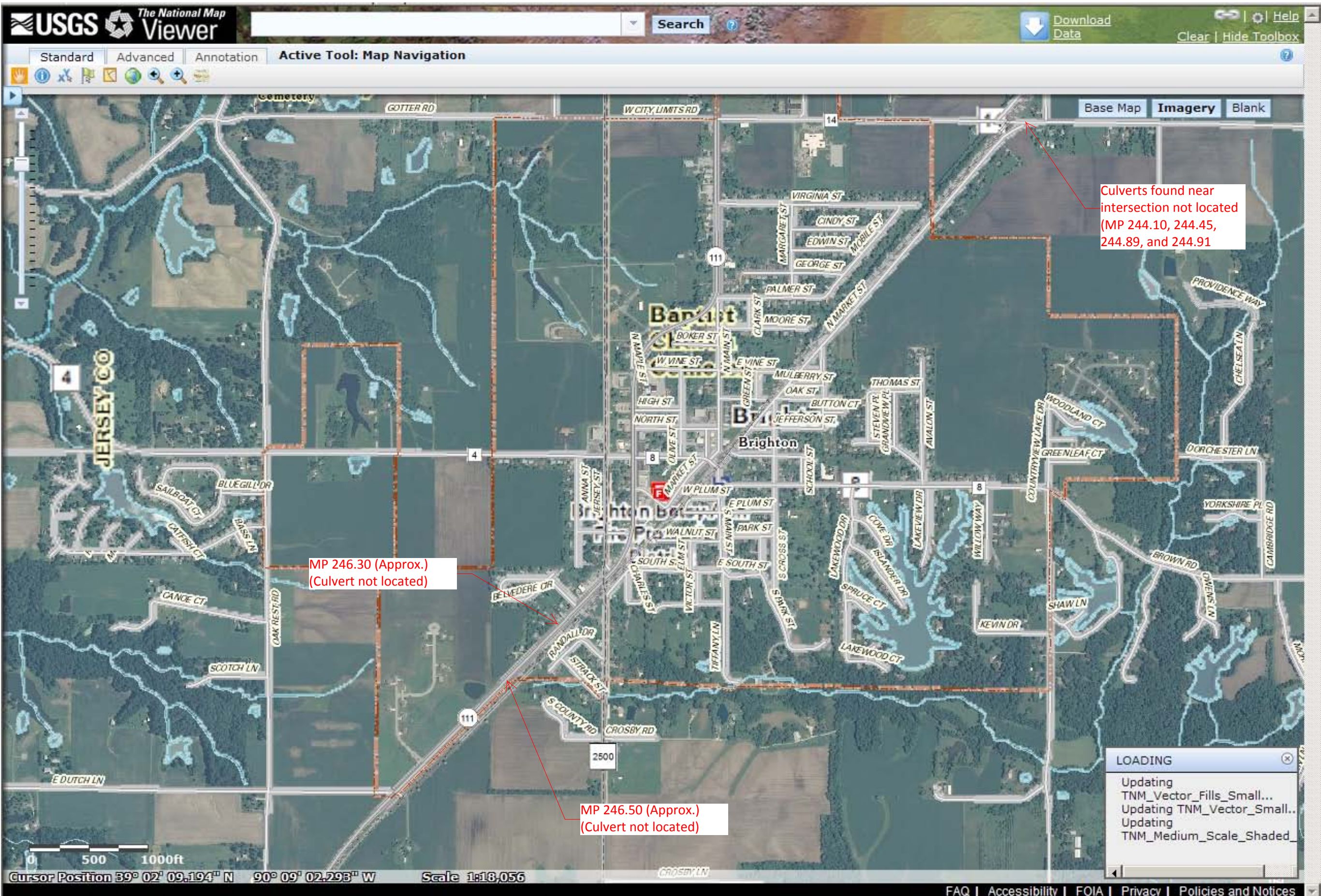
Culverts found near intersection not located (MP 244.10, 244.45, 244.89, and 244.91)

LOADING

- Updating TNM_Vector_Fills_Small...
- Updating TNM_Vector_Small...
- Updating TNM_Medium_Scale_Shaded...

Cursor Position 39° 08' 24.306" N 90° 08' 01.422" W Scale 1:18,056

FAQ | Accessibility | FOIA | Privacy | Policies and Notices



Culverts found near intersection not located (MP 244.10, 244.45, 244.89, and 244.91)

MP 246.30 (Approx.) (Culvert not located)

MP 246.50 (Approx.) (Culvert not located)

LOADING

- Updating TNM_Vector_Fills_Small...
- Updating TNM_Vector_Small...
- Updating TNM_Medium_Scale_Shaded...

